

FINEPRINT

A spatially explicit physical trade framework to
trace environmental impacts of resource
extraction along global supply chains

Impacts depend on specific location

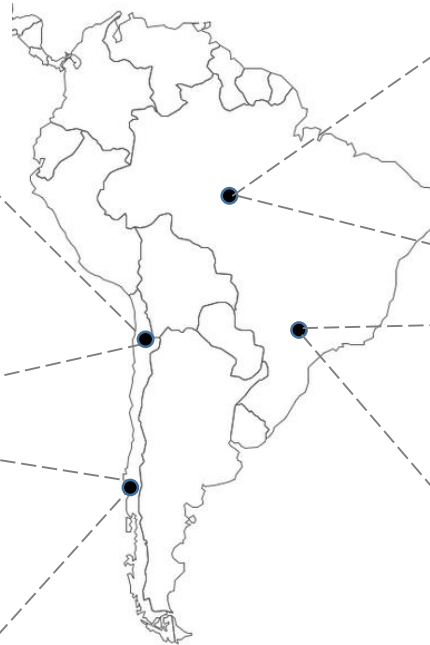
Chile: Copper mining



<http://intradayfun.com/2011/01/10-world-biggest-holes-created-by-human-and-nature/>



http://www.dw.com/image/0%2C%2C19318441_302%2C00.jpg



Brazil: Soybean production



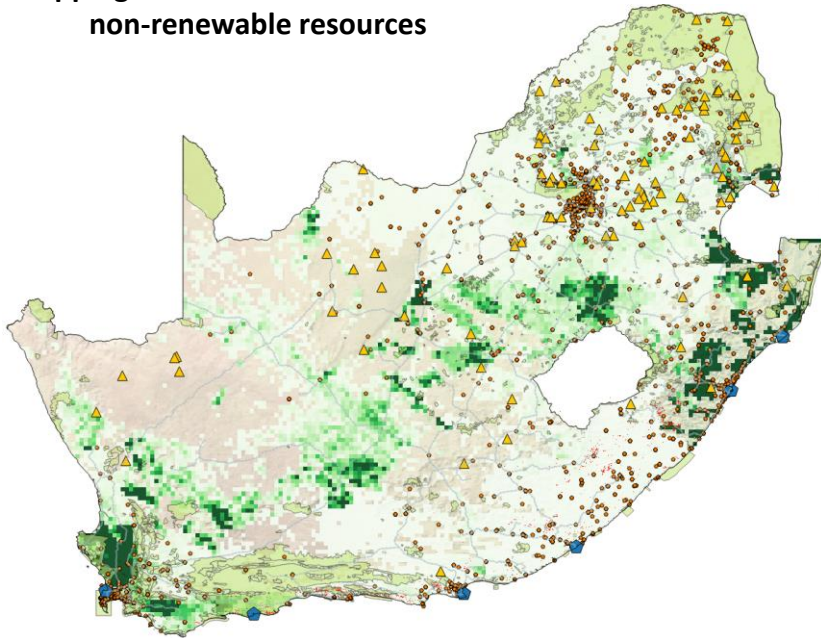
<https://www.greenpeace.org/archive-international/en/news/features/amazon-destruction/>



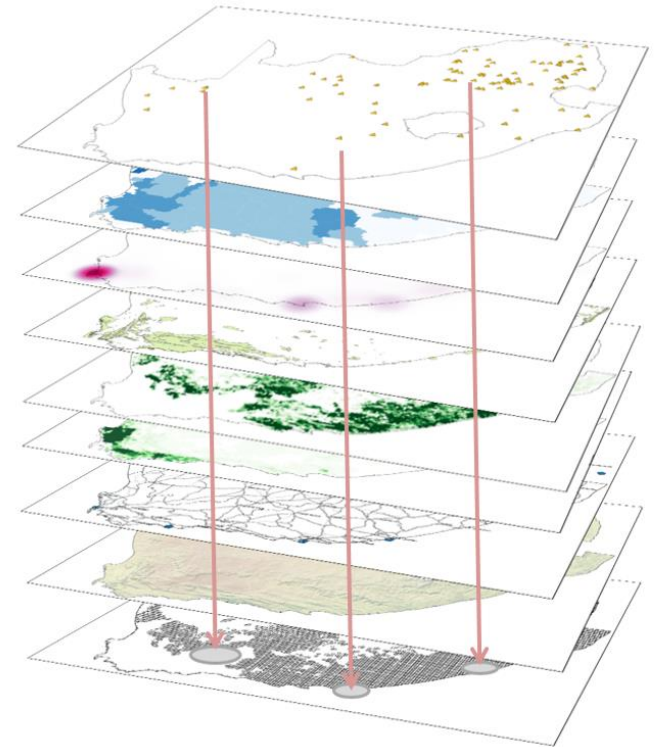
https://es.wikipedia.org/wiki/Archivo:Sembrado_de_soja_en_argentina.jpg

Global mapping of extraction & impacts

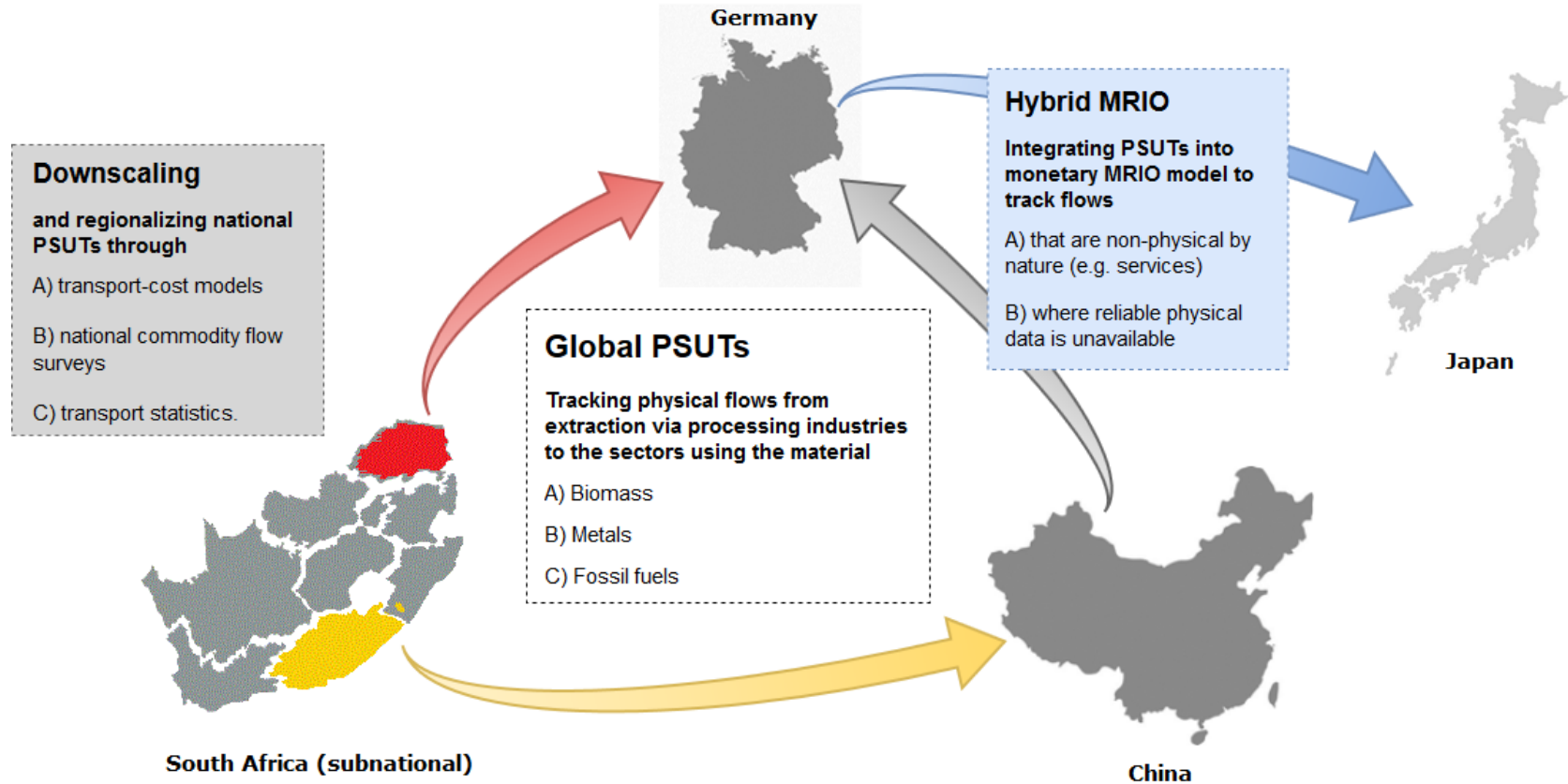
Mapping the extraction of biomass & non-renewable resources



Multi-layer, time series analysis of environmental and social impacts related to raw material extraction and their underlying drivers



Spatially explicit, global material flow model



1. Data availability

- Linking impacts to pressures via time series analysis

2. Linking spatial data with trade model

- Downscaling national model with incomplete data

3. Computational demand

- Global 1km x 1km grid for various layers



European Research Council
Established by the European Commission



www.fineprint.global
github.com/fineprint-global
researchgate.net/project/FINEPRINT

Contact: Hanspeter Wieland
hanspeter.wieland@wu.ac.at